



FOLKETEATERET

Technical Specification

Specification for 2024 / 2025

*The specification acts as a guide for visiting productions,
equipment availability & stage space is altered / limited
by ongoing productions*

No images / drawings to scale within this specification

Contents

	Page:
1.0 Contact information	3
2.0 Load-in	4
2.1 Shore power	6
3.0 Stage	6
3.1 Measurements	7
3.2 Stage layout	8
4.0 Loft & flown goods	9
4.1 Bars	9
4.2 Electronic hoists	9
4.3 Trusses & rigging	9
4.4 Loft plan	10
4.5 Soft goods	
5.0 Lighting	11
5.1 House desk & position	11
5.2 Projection & video	11
6.0 Sound	11
6.1 House board & position	11

I.0 Contact information

Project Manager

Pamela Næss

email: pamela@folketeateret.no

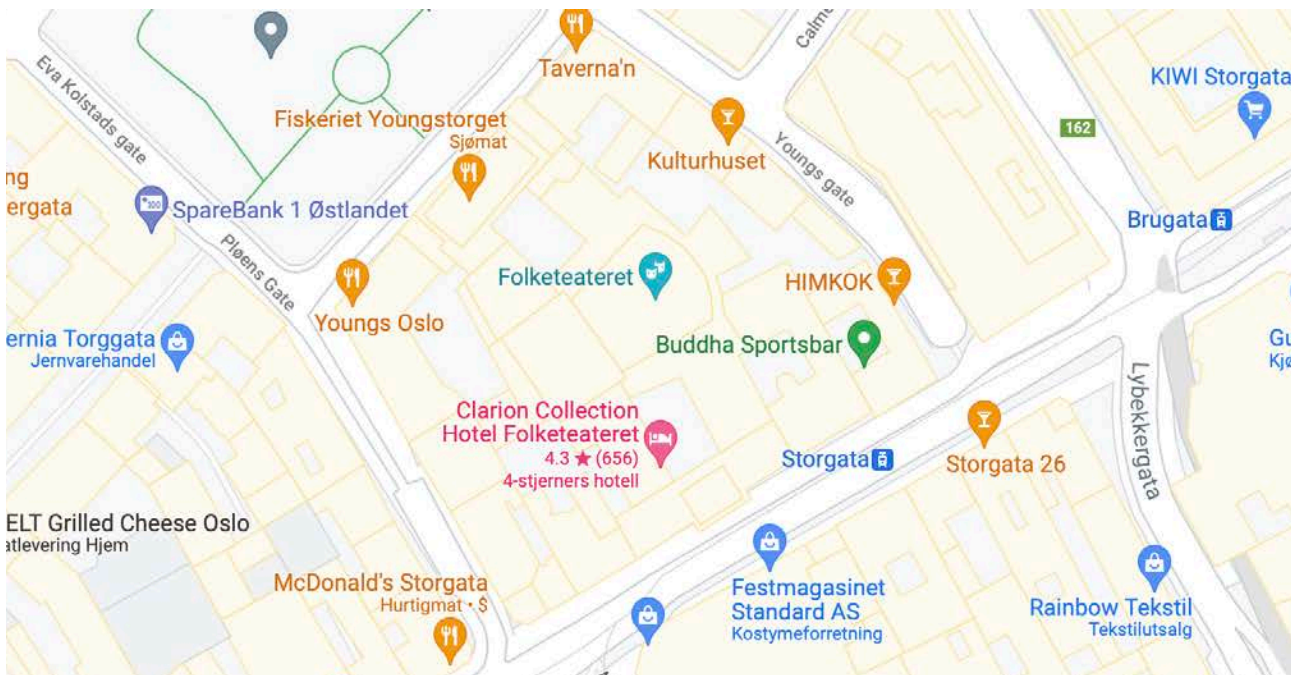
Technical Manager (TM)

Alex McNally

email: alex@folketeateret.no

Address

Storgata 21-23
0184 Oslo
Norway



2.0 Load-in

Loading into the theatre takes place from street level. Forklift hire is required for productions without appropriate transport (such as trucks with loading lifts vs side loaded trucks only). There is room for two semi-trailers to be side or ramp loaded at the same time on Youngstorget.

Advanced notice of at least one month is needed to ensure appropriate street / parking closure to enable such on / off loading. Smaller productions which require a smaller van load off / on can be done without street / parking closure, but vehicles **cannot** be parked on street, drop off parking place only.

The theatre is unable to offer any accommodation for parking beyond requested street parking space closures asked ahead of time, for vehicles such as trucks or tour coaches (with shore power available).

Load-in address

Youngstorget 2
0181 Oslo
Norway

From street level to stage level there are two potential lifts for use down a good entry hallway into the building. Dimensions and weight restrictions are as seen below.

Entry from street

When loading, the pavement between road parking and door entry is quite busy during the daytime and weekend evenings. Extreme caution is needed when working, and visiting companies are required to wear high visibility clothing when working here.

This is especially important when operating a forklift. Any technical member of the visiting company who wishes to operate a forklift must provide suitable proof of training and qualification, working under their own liability.

Information

Width: 2.25m

Height: 3.2m



Lift 1 - Langeheisen (“the long elevator”)

The langheisen is our main way of moving items from street to stage level. Whilst the width of the elevator can become problematic for some larger pieces, an alternative lift (see below) can be used for some wider items.

Information

Max weight: 2000kg

Width: 1.15m

Length: 16m

Height: 4m



Lift 2 - Elefanten (“the elephant”)

Elefanten goods elevator is a shared lift with surrounding business within the building. This lift can be used with direct access to stage level, however, access to it can be restricted and at times slow. The access to this lift is also narrower and shorter than the lift itself (see below), so please note that measurements given are for the lift itself.

Information

Max weight: 2000kg

Width: 2.15m

Length: 3.35m

Height: 4m



Access to Elefanten - Size restrictions

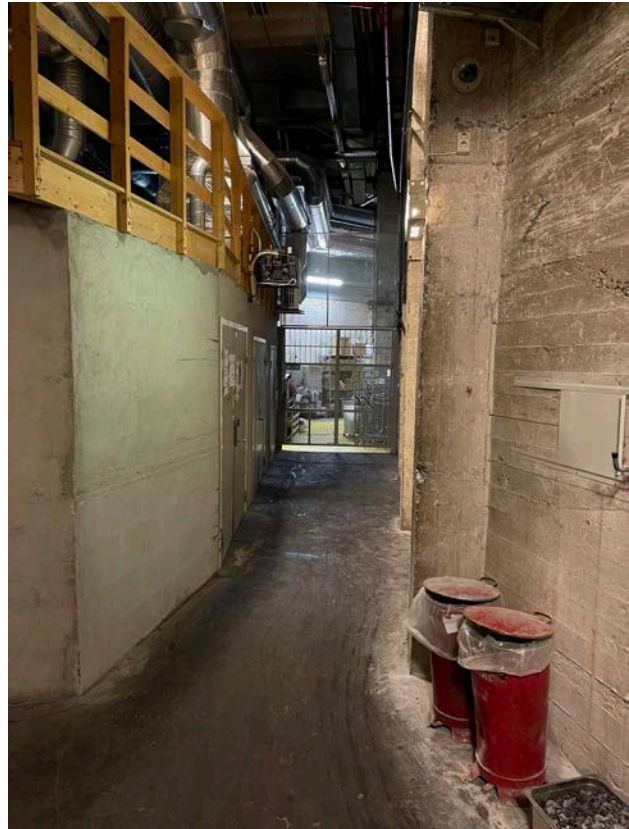
The narrow passageway is restrictive toward any items needed to be taken up via elefanten elevator.

Measurements given are from the narrowest points.

Information

Width: 1.6m

Height: 2.5m



2.1 Shore power

Folketeateret can provide 1 x 63A 400V and / or 2 x 32A 400V to kerb side.
Any adaptors / transformers must be brought with visiting company.

3.0 Stage

The stage dimensions given are with the venue is clear of any productions in house. As a general rule, the theatre can guarantee a playing area of 10m x 10m for all visiting productions. However, this may include the need for visiting productions to perform within the set and proscenium designs of the musical in-house at the time.

If needed, the stage can be cleared and returned to a “blank” state. But this requires notice well in advanced in order to be achieved. Please contact TM if there are questions on how a visiting production could exist within any potential set that might be present on or around the stage.

If stairs are needed from auditorium to stage level this must be requested ahead of time. Sub-wells on the either side of the apron will have the subs removed (and placed elsewhere if required) and stairs put in place; allowing stair access from the auditorium to stage level from either downstage corner.

Folketeateret has a very narrow stage right area. Large set pieces are not suitable to be stored on stage right without significantly reducing the width of the stage.

Any set pieces which roll-on or are fixed to the ground must be cleared ahead of time if weighing over 500kg due to the structural design of our revolve.

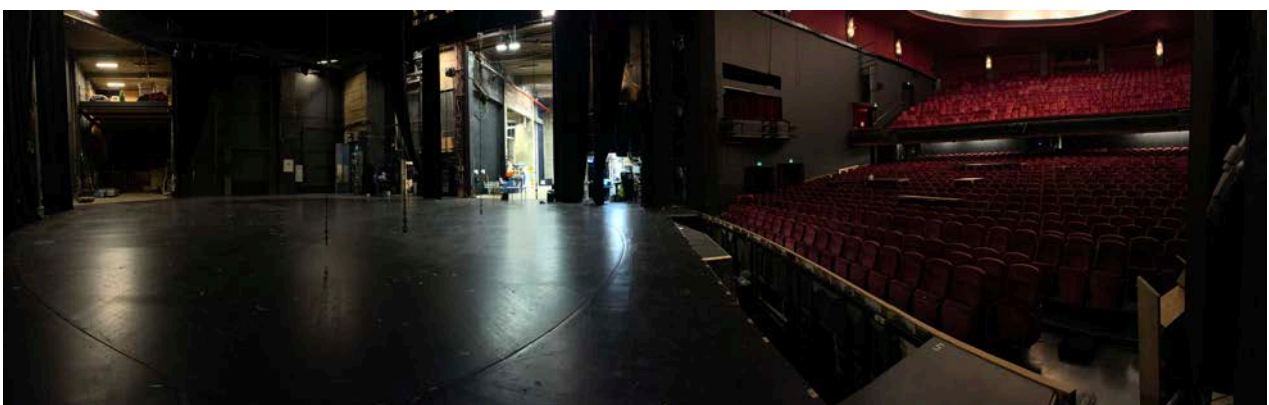
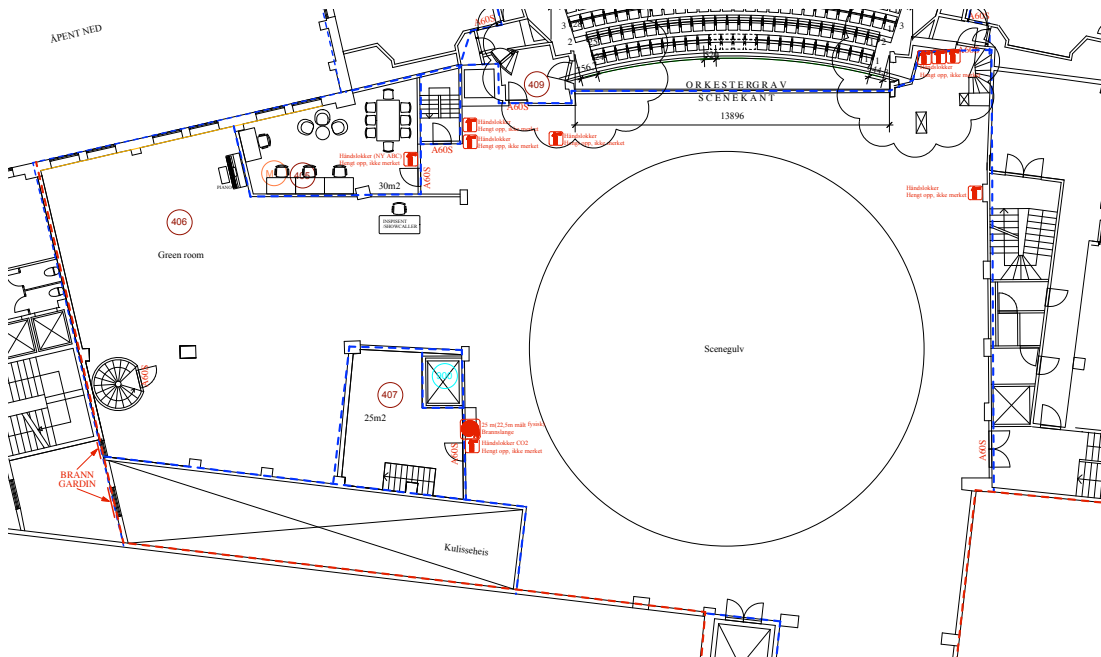
3.1 Measurements

<i>Item</i>	<i>Dimensions</i>	<i>Description</i>
Proscenium (W)	13m	Teasers on either side of stage, usually pulled in to 12m to hide set behind of ongoing productions
Proscenium (H)	8.6m (iron height max 7.85m)	This height can be lower if ongoing production has a dedicated proscenium. Iron can be lowered to form a black border and reduce the appearance of the proscenium height to as low as 7.5m
<i>Full stage:</i>		
- Width	22m	Full stage usually restricted by set and need for storage; area at the back of the stage used for storage by visiting company when needed
- Depth	23m	
<i>Stage with legs & rear black:</i>		
- Width	12m	Hard legs rigged to provide a black-box set up, with a rear full black
- Depth	18m	
<i>Apron (with closed orchestra pit):</i>		
- Apron (W)	10m	The apron has a curved front edge. The 12m width is taken from in-between the sub-wells on either side. These can be replaced with stairs if needed
- Apron (D)	2.2m (at deepest point)	
<i>Apron (with open orchestra pit):</i>		
- Apron (W)	10m	A conductor's hatch is available if required
- Apron (D)	1m	An open pit reduces apron area and does not go out into the auditorium. 2.5m drop into pit
Revolve (D)	18.1m	Revolve utilisation must be requested in advanced

Please note, any show decks or set pieces that utilise area under the safety-curtain must be easily removable in case of an emergency which would require lowering of the iron.

3.2 Stage layout

This shows the stage area as “empty”. The house areas as seen to stage left of the stage are used to store set pieces of ongoing productions, but some space may exist to accommodate other materials if needed and clarified ahead of time with the TM.



4.0 Loft & flown goods

Please note, the loft is usually extremely busy due to two musicals normally existing within the house in rep with each other. Therefore, any items needing to be flown **must** be cleared with the TM ahead of time. Folketeateret will always endeavour to accommodate any requests within the loft, but specific placements of flown items cannot be guaranteed unless told otherwise by TM.

A loft plan can be sent upon request outlining; which bars and hoists are in use with other productions; which items can be de-rigged to allow room for visiting productions; and which items are installation pieces which must remain within the loft (though usually can be flown up and out of the way for the visiting company).

Grid height is 28m from stage level.

4.1 Bars

The venue has a double haul fly system, meaning a manually flown system using counterweights. Folketeateret therefore needs any / all loft weights given ahead of time so as to ensure the safety of flown objects. Loft technicians will be needed for any calls requiring the use of flown bars.

All manually flown bars have a pipe diameter have a 76mm and a max weight of 350kg.

There are a total of 42 fly-bars; however, most are in use by ongoing productions. Info upon request.

4.2 Electronic hoists

There are some electronic chain hoists available. These hoists are attached to truss (30cm x 30cm tri or square form truss when on-stage) and have a max weight of 1200kg.

All in-house electronic hoists are not suitable for running through performances and will only be lowered / raised for the sake of rigging and setting a fixed trim height.

Four electronically hoisted bars are over the DS area of stage, with a fifth one being the FOH advanced truss (50cm x 50cm square form truss).

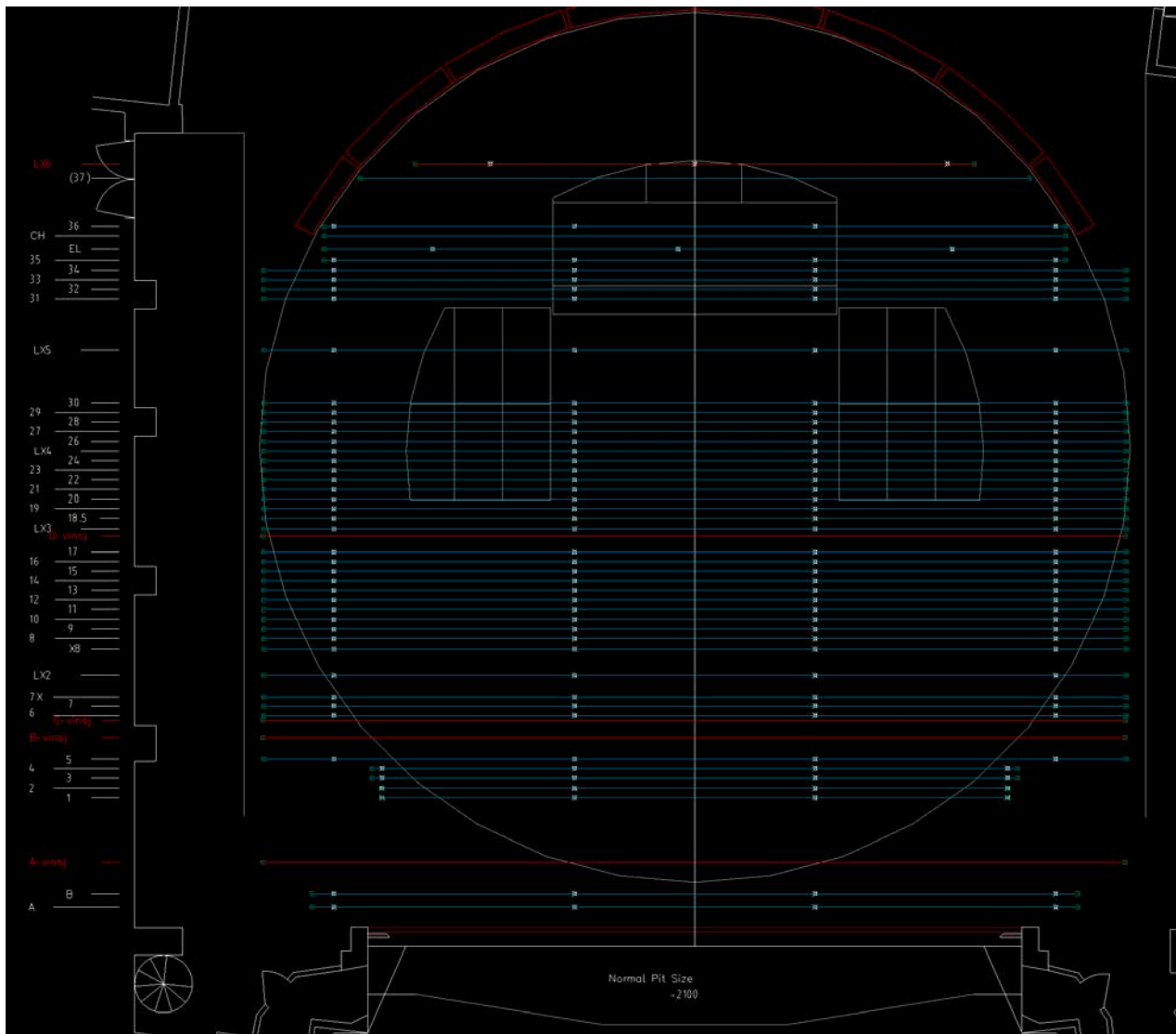
Any company wishing to fly their own motors must share a rigging plan in good time before arrival, and must be confirmed by TM ahead of time. Rigging points in the loft are limited by the older design of the ceiling steels, and must be carefully planned ahead of time to ensure weight distribution and safety. The visiting company must always rig motor-up.

4.3 Trusses & rigging

A selection of trusses / soft steels / shackles / etc, exists within the house and can be used to rig any flown items. Use of these materials must be requested ahead of time. Contact TM for available stock.

4.4 Loft plan

The plan below act as a general guide to the loft placements. The electronic winches are subject to move dependent on where they are needed for ongoing musicals within the house.



4.5 Soft goods

Hard legs / borders / blacks / curtains are available, but will need to be requested ahead of time. Please contact TM to discuss the availability of our stock.

5.0 Lighting

The LX rig is determined by the ongoing production in house. The need for rigging specials or additional LX bars is possible, but needs determining ahead of time. As a basic guide, Folketeateret can always offer general washes, colour washes / backdrops, follow spots and some uplights.

A copy of the current plot is available upon request from TM.

5.1 House LX desk & position

The in-house desk is a GrandMA 3 located rear centre of balcony, with an area of 3m x 1m. All patching to this position is over CAT5, there is no DMX within our patch bays to FOH.

It is compulsory to use our in-house LX tech with any visiting company requiring use of our LX grid. In-house LX tech is an experienced programmer and operator, with strong understanding of the given rig within the venue at any point.

5.2 Projection & video

Folketeateret is home to one of Norway's largest LED screens, with a 18m x 8m 3.5t screen hanging 16m from front of stage. Alternatively, there is a 4k digital projector (max 3700 lumens) with projector screen available for hire.

Both of these items are HDMI input and need requesting for hire ahead of time.

6.0 Sound

PA is subject to ongoing productions' specification. Folketeateret can guarantee PA with full auditorium coverage from front hangs, delay lines, surround speakers and front fills.

32 wireless channels available for hire with our in house Shure RX system. There is a selection of microphones and IEMs available for hire, but this will vary significantly dependent on the use of ongoing productions. Please contact TM for a breakdown of stock availability.

6.1 House board & position

The in-house board is an AVID Venue S6L-24D. Desk position is rear orchestra centre, 2.4m x 1.6m.